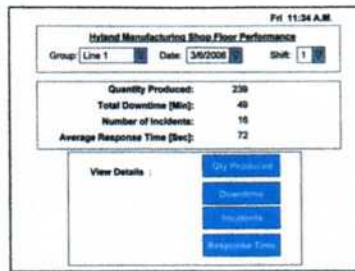




## *Wireless Production Floor Communications, Data Collection & Monitoring Systems*



Wireless Innovations for the Production Floor



# ***Benefits of the VersaCall System***

## ***Reduce Downtime***

- Minimize Production Disruptions
- Immediate Communication of Production Stoppage Issues  
*Maintenance Request / No Materials / Work Instruction Problems*
- Measure & Improve Response Time for Factory Support Personnel

## ***Identify & Eliminate Waste***

- Identify Production Inefficiencies  
*Where / When / Who*
- Measuring and Profiling Actual Performance vs. Standard  
*Set-Up Times / Scrap or Yield / Cycle or Takt Time*

## ***Eliminate Manual Data Collection***

- Automatic Data Capture – Elimination of the Data Input Function
- Significant Improvement in Data Accuracy, Quality, Consistency & Turn-around Time
- Operators Focus on Production Tasks
- Integration with ERP and CMMS Software

## ***Real Time Production Visibility***

- Dashboards – Complete Visual Status of Line Performance  
*Line Operating / Output / Downtime / Scrap*
- Virtual Andon Panel – Profiles Production Issues

## ***Performance Intelligence***

- Trend Visibility
- Problem Areas  
*Identify Root Causes from Symptoms*
- Measurement of Key Production Parameters  
*Provides True Performance Visibility Using OEE and Six Sigma Analysis*
- Supports the Basic Axiom “ To Measure is to Know”



# VersaCall Systems Start \$4,995

## Complete Hardware and Software Systems

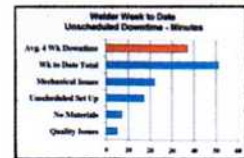
### Shop Floor Performance System [SFPS-I] - \$4,995

*Communications – Capture Downtime by Reason Code / Response Time / Set-Up / Rates / Availability  
Mini Control Unit [256 Monitoring Points], 2 Reason Code Modules, Receiver, Paging  
Transmitter, 2 Pagers, Performance Intelligence Software Level I [Incident Qty, Response Time  
and Downtime Reports], No Audio Capability*



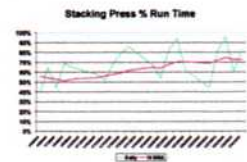
### Communications & Downtime System [CDS-I] - \$ 4,995

*Communications – Captures Downtime / Response Time / Factory Floor Support Issues  
Mini Control Unit [256 Monitoring Points], 4 Four Button Call Station Modules, Receiver,  
Paging Transmitter, 2 Pagers, Performance Intelligence Software Level I [Incident Qty,  
Response Time and Downtime Reports], No Audio Capability*



### Data Collection System [DCS-I] - \$6,750

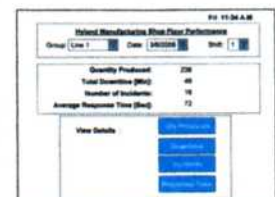
*Captures Data Only (No Communications) – Line Availability / Set-Up / Run Time / Downtime  
Mini Control Unit, 4 Reason Code Modules or 4 Dial Modules, Receiver, Data Collection  
Software Package*



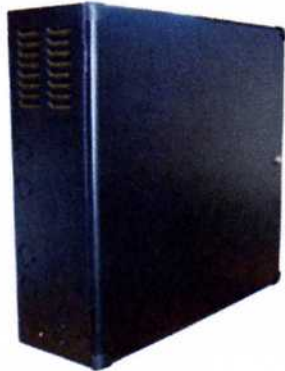
### Advanced Shop Floor Performance System [ASFPS-I] - \$9,500

*Communications / Downtime by Reason Code / Scrap by Reason Code/ Lot Number, P/N,  
Employee/ Counts / Response Time /Set-Up / Rates / Availability / Key Pad Data Entry / Support  
Barcode Reader*

*Mini Control Unit [1000 Monitoring Points], Enclosure, Receiver, 2 Data Input Modules, 2  
Switch Contact Interface Modules, Paging Transmitter, 2 Pagers, 2 Bar Code Readers w/stands,  
2 Virtual Andon Panels, Performance Intelligence Software*



# *VT2000 System Components*



## Control Unit

- 4000 Monitoring Points
- Built on .Net Framework
- Stores Factory Floor Data

## Mini Control Unit

- 1000 Monitoring Points
- Built on .Net Framework
- Stores Factory Floor Data



## Receiver

- 900 MHz Spread Spectrum Receiver
- Receives Signals for Input Modules



## Repeater

- Enables Long Distance Communication of Input Modules with Control Unit

## Radio Transmitter

- UHF or VHF versions
- Transmits Audio over Selected Radio Channel to 2-way Radios



## Paging Transmitter

- POCSAG Paging Transmitter
- Transmits messages to On-site Pagers & RF Devices



# *VT2000 Wireless Input Modules*



## Wireless Switch Contact Module

- Up to 16 Contact Points
- Monitors Sensors on Factory Floor Equipment



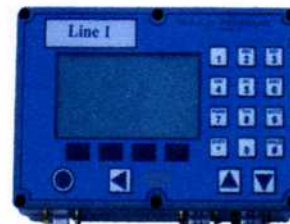
## Call Station

- Operator Enabled Communication of Factory Floor Issues
- Communication path for each Individual button is programmable



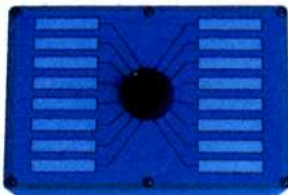
## Reason Code Module

- Up to 70 Programmable Reason Codes
- Captures Counts & Rates



## Data Input Module

- Captures Counts, Rates, Scrap by Reason Code
- Provides Lot # or Production Run Performance
- Integration Options Barcodes, iButton, & Magnetic Cards



## Dial Module

Dial to Status or Request for Support  
 16 Programmable Points  
 Operator Enabled Communication of  
 Factory Floor Issues



